



K543 Knauf Hartmut

Cavity dowel for drywall systems with a load capacity of up to 65 kg

K543 Knauf Hartmut

Cavity dowel for drywall systems with a load capacity of up to 65 kg



Product description

Hartmut is a cavity dowel consisting of metal and plastic including a suitable screw (M5x60).

Order information

50 pcs. pack material no. 00131376

Fields of application

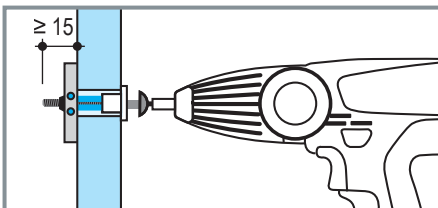
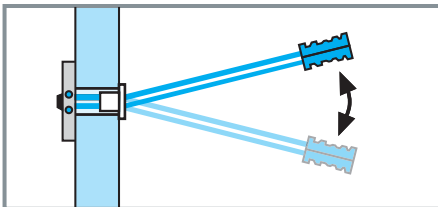
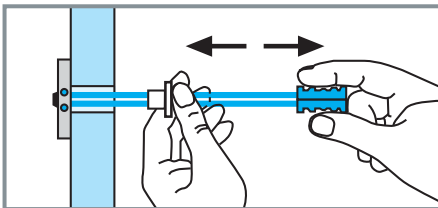
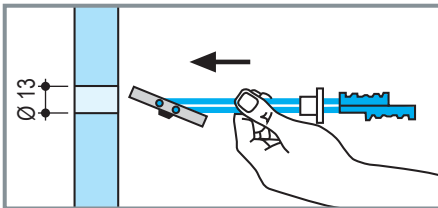
Fixing of loads

- on metal stud partitions and wood frame partitions with up to 65 kg per dowel
- on suspended ceilings with up to 6 kg per dowel and up to 6 kg per cladding span width and metre.

Properties

- Easy and fast application
- High application reliability
- High load bearing capacity
- Reliable durability of load bearing capacity
- For all cladding thicknesses
- Variable application due to the attachment clips with click function

Application



All dimension in mm

Technical Data

Cladding thickness t mm	Load bearing capacity per dowel (tension and shear load) in drywall partitions	
	Knauf boards kg	Diamant kg
10	-	25
12.5	35	40
15 / 18	40	45
2x 10 / 20	45	55
2x 12.5 / 25	55	60
≥ 2x 15	60	65

Maximum thickness of the item to be fixed

Length of screw	60 mm
minus cladding thickness	- d (mm)
minus anchoring length	- 15 mm
	<u>..... mm</u>

A longer screw M5 can be used if necessary (not included).

Knauf Head Office

▶ Phone: +971 4 337 7170

▶ Fax: +971 4 334 9659

▶ P.O.Box: 112871, Dubai

▶ info@knauf.ae

Knauf Manufacturing Plant

P.O.Box 50006
Ras Al Khaimah, U.A.E.
Tel: +971 7 268 9837
Fax: +971 7 221 5301

Knauf Gypsum India Pvt.Ltd

No. 8 - C, 8th Floor Commercial Complex
Doshi Tower, New No. 205, (Old No.156)
Poonamallee High Road,
Kilpauk Chennai - 600010
Tamil Nadu, India
Tel: +91 44 49580000
Fax: +91 44 49575300



Disclaimer:

The information provided in this leaflet is only intended to give guidance in selecting and using Knauf products. While we make every effort to ensure its accuracy, neither Knauf LLC and its branches nor any of its employees or affiliates warrant or assume any legal liability or responsibility for the completeness or usefulness of any failure in installation or constructing any structure installation or building or caused by using this leaflet. Readers are advised to independently verify this information prior to rely on it. In particular, readers must obtain appropriate independent advice on the use in specific structures, installations or buildings to ensure compliance with all regulations, including health and safety regulations. Knauf reserves the right to amend technical specification.

The constructional and structural properties, and characteristic building physics Knauf system can solely be ensured with the exclusive use Knauf system components, or other product expressly recommended by Knauf.

www.Knauf.ae